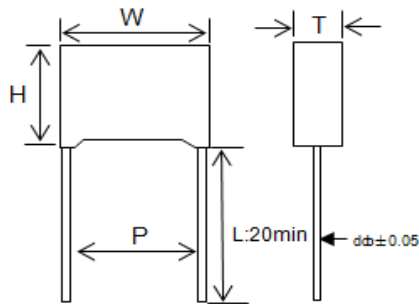


## 电容降压专用金属化聚丙烯膜交流电容器 (X2类, THB 防潮系列) Metallized polypropylene film A.C. capacitor (class X2, THB SERIES)

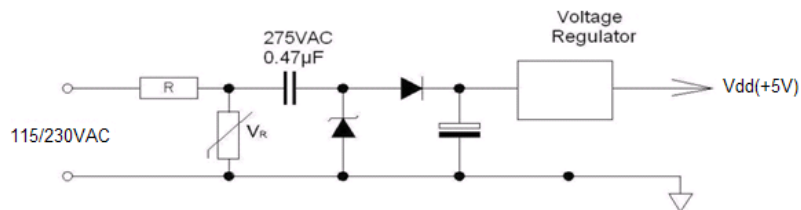
### ■ 外形图 Outline Drawing



### ■ 特点

- 专门设计用于与 100~240VAC 电源串联的电容降压电路场合，如电表、LED 驱动模块等
- 金属化聚丙烯
- 自愈性能优异，能承受浪涌电压冲击
- 长期负载下优异的电容容量稳定性
- 优异的防潮性能
- 优异的阻燃性能
- 在严苛的环境下（如高温高湿）长期应用容量稳定性优异

### ■ 典型电路 Typical circuit



### ■ Features

- This is specifically designed for applications in serial with the 100~240Vac main, i.e.: capacitive divider, for example, energy meter, LED driver, etc.
- Metallized polypropylene structure
- Good self-healing properties, withstanding surge voltage stressing
- Long stability of capacitance
- Good properties in damp environment
- Excellent active and passive flame resistant abilities
- High stability of capacitance under severe ambient condition, such as high temperature and high humidity

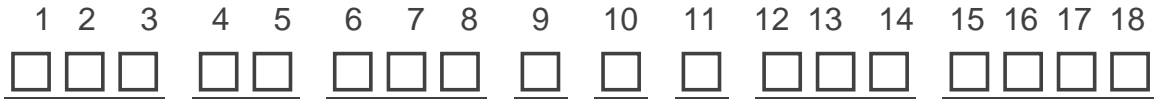
### 技术要求 Specifications

引用标准 Reference Standard	GB/T6346 (IEC 60384-14)	
电容器类别 class	X2 类	
气候类别 Climatic Category	40/110/56	
工作温度范围 Operating temperature	-40℃~110℃	
额定电压 Rated Voltage	310Vac	
电容量范围 Capacitance Range	0.01 ~ 2.2µF	
电容量偏差 Capacitance Tolerance	±10% (K), ±20% (M)	
耐电压 Voltage Proof	引线之间 Between Terminals:	4.3Ur(DC) (5S)
	极壳之间 Between Terminals To Case:	2 120Vac (1min)
损耗角正切 Dissipation Factor	0.0010µF ≤ CR ≤ 1.0µF	≤ 0.15%
	1.0µF < CR ≤ 2.2µF	≤ 0.3% (20℃, 1kHz)
绝缘电阻 Insulation Resistance	≥ 15 000MΩ, CR ≤ 0.33µF	(20℃, 100V, 1min)
	≥ 5 000s, CR > 0.33µF	
防潮测试 THB test(Damp heat test with loading)	Temperature: 85℃ ± 2℃ ; Humidity: 85 +2/-3 % Voltage setting: 240VAC 50Hz ; Time Duration: 1000H Capacitance change: Δ C/C : ≤ ± 10% DF Change: C R ≤ 1.0µF Δtan δ : ≤ 0.8% at 1 KHZ C R > 1.0µF Δtan δ : ≤ 0.5% at 1 KHZ	

## 产品代码说明 Part number system

### ■ 18 位产品代码说明如下:

The 18 digits part number is formed as follow:



**W 4 1**

第 1~3 位: 型号代码

W41=MKP (E)

第 4~5 位: 交流额定电压

Q3=310V

第 6~8 位: 标称容量

举例 : 104 =  $10 \times 10^4$  PF = 0.1 $\mu$ f

第 9 位: 容量偏差

K=±10%, M=±20%

第 10 位: 引线脚距

M=15mm P=22mm S=27mm

第 11 位: 引线线径

6= CP 0.6mm 7= CP 0.7mm

8= CP 0.8mm

第 12 位: 引线加工和包装代码

L= 直脚 K= 引线成型

T= 弹带包装

第 13~18 位: 内部特征码

Digit 1 to 3: Series code

W41=MKP(E)

Digit 4 to 5: AC rated voltage

Q3=310V

Digit 6 to 8: Rated capacitance

For example: 104 =  $10 \times 10^4$  PF = 0.1 $\mu$ f

Digit 9: Capacitance tolerance

K=±10%, M=±20%

Digit 10: Pitch

M=15mm P=22mm S=27mm

Digit 11: Lead Wire diameter

6= CP 0.6mm 7= CP 0.7mm

8= CP 0.8mm

Digit 12: Lead form and packaging code

L= straight lead K= Lead kinked

T= ammo-pack

Digit 13 to 18: Internal use

## ■ 外形尺寸 Dimensions (mm)

310Vac						
Cn ( $\mu$ F)	W max	H max	T max	P	d	Part number
0.10	18.0	12.0	6.0	15.0	0.6	W41Q3104-M6*****
0.15	18.0	14.5	8.5	15.0	0.6	W41Q3154-M6*****
0.22	18.0	14.5	8.5	15.0	0.6	W41Q3224-M6*****
0.33	18.0	15.5	9.5	15.0	0.8	W41Q3334-M8*****
0.22	26.5	16.5	7.0	22.0	0.8	W41Q3224-P8*****
0.27	26.5	17.0	8.5	22.0	0.8	W41Q3334-P8*****
0.33	26.5	17.0	8.5	22.0	0.8	W41Q3334-P8*****
0.39	26.5	19.0	10.0	22.0	0.8	W41Q3394-P8*****
0.47	26.5	19.0	10.0	22.0	0.8	W41Q3474-P8*****
0.56	26.5	19.0	10.0	22.0	0.8	W41Q3564-P8*****
0.68	26.5	19.0	10.0	22.0	0.8	W41Q3684-P8*****
0.75	26.5	19.0	10.0	22.0	0.8	W41Q3754-P8*****
0.82	26.5	19.0	10.0	22.0	0.8	W41Q3824-P8*****
0.87	26.0	22.0	12.0	22.0	0.8	W41Q3874-P8*****
0.91	26.0	22.0	12.0	22.0	0.8	W41Q3914-P8*****
1.0	26.0	22.0	12.0	22.0	0.8	W41Q3105-P8*****
0.56	32.0	18.0	9.0	27.0	0.8	W41Q3564-S8*****
0.68	32.0	18.0	9.0	27.0	0.8	W41Q3684-S8*****
0.82	32.0	19.5	9.0	27.0	0.8	W41Q3824-S8*****
1.0	32.0	19.5	11.0	27.0	0.8	W41Q3105-S8*****
1.5	32.0	20.0	11.0	27.0	0.8	W41Q3155-S8*****

备注: 1. "-" 表示容量偏差。"- " = capacitance tolerance code, M=±20%,K=±10%,

2. 第 12 位表示引线加工和包装代码, L= 直脚 straight lead K= 引线成型 Lead kinked T= 弹带包装 ammo-pack